

Hazel Class

Curriculum Newsletter

Spring Term 1 2026

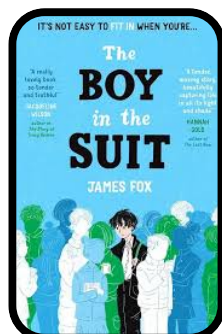
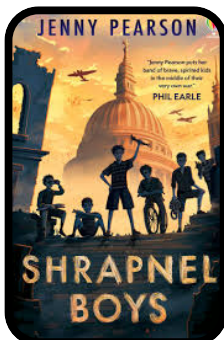


Happy New Year!

It is great to welcome everyone back to school and we would like to start by thanking you all for the lovely Christmas gifts!

In English our spelling sessions will focus on the rules of how root words can change when different suffix endings are added. Our SPAG focus will be on word classes and the subjunctive form. Our writing focus will link to our Ancient Greece theme and we will complete a variety of narrative pieces on the theme of Myths and Legends.

Our class novels are chosen by the children through a class vote. We will finish reading 'Shrapnel Boys' before moving on to 'The Boy in the Suit'. We will be continuing with our current guided reading novels for this half term.



In maths this half term we will be consolidating our learning about fractions, and then developing our understanding of fractions further by learning how they are related to decimals and percentages. We will learn more about place value within one to help us understand decimals and complete a variety of problem solving questions related to fractions, decimals and percentages.

Our science topic this half term is 'Light'. The children will learn about light, how we see, shadows, reflection and refraction. They will have the opportunity to make their own functioning periscope and will work scientifically and collaboratively to complete a variety of experiments.

In history, we will learn about Ancient Greece. We will use a range of resources to help us become familiar with the key events of this period in history and the lasting impact the Ancient Greeks had on the modern world.

Our DT topic this term will look at electrical systems and making a steady hand game.

PE will take place on a Monday and Tuesday again this half term. On Mondays we will be inside learning how to work collaboratively to choreograph and perform a dance. On Tuesdays we will be improving our gymnastic skills in sessions led by Mr Walton. The children can come in to school in their PE kits on both these days.

Our first Forest School session of the new half term will be on Wednesday 14th January. The children will need to come in to school in their normal uniform and change into their Forest School kit in school.

Please remember legs and arms should be covered with long sleeves and trousers to avoid scratches, stings and insect bites. The children will also need wellies, walking boots or trainers that you don't mind getting muddy, as well as waterproofs and suitable layers.

Our RE big question this half term is: 'Why is Pilgrimage important to some religious believers'. We will be exploring this question looking at a range of religions including Christianity, Islam, Hinduism and Sikhi.

Homework Expectations

This year, children will be expected to complete the following homework tasks:

*Reading (daily)

Please encourage your child to read, preferably daily and record in their planners. Pupils are welcome to write this themselves. Reading diaries are required in school everyday to monitor reading and for use in guided reading groups. The children will also complete an activity based on the role they have been given in their guided reading session. More details about this will be shared in the guided reading homework book.

*Spellings (once per week)

Children will bring home a list of spellings to learn and will be tested on them at the end of the week. There will be spaces for the children to record their personal spellings or they will investigate and record more words linked to the spelling pattern. Spellings can be completed on the sheet provided. This sheet is to be kept at home. In addition to the spelling sheet there will also be a sheet focusing on a particular grammar rule. This sheet can be returned to school for marking if the children wish.

*TTRockstars

Regular times tables practice will increase their confidence and speed of recall. If you have any problems logging in, please let us know. Children will be tested once a week in a speed test on their target times tables