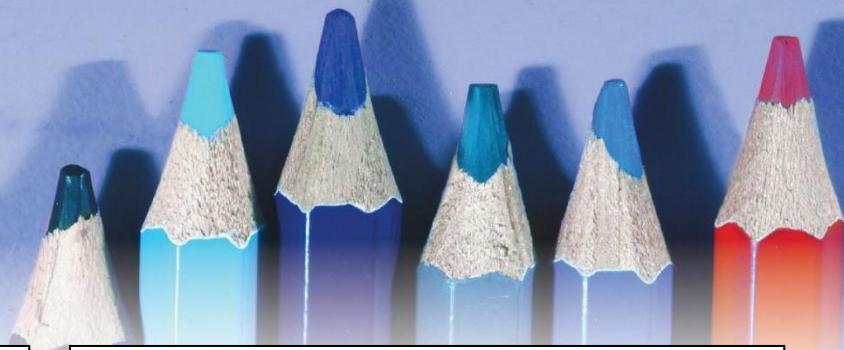


Year 3 Class Newsletter Autumn Term



WELCOME BACK!

We hope you and your children had a lovely summer break and they are excited to get stuck into a new school year. Miss Bruerton will be teaching the class until Miss Tams steps down from Acting Head. Miss B will be joined by Mrs Postill and Mrs Thorn this year. Couple of things for Key Stage 2: The children can bring their own morning snacks and you may purchase milk if you wish. Please can everyone have a pair of wellies in school for when we use the field for lessons or for really wet break times. Thank you

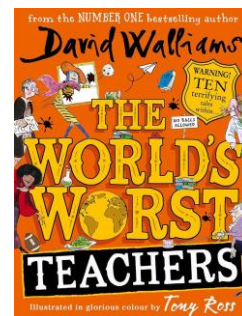
HISTORY

Our history topic this term is studying the Stone Age to Iron Age. We will learn about prehistory and how we know about this time through sources discovered in archaeology. We will look at how early humans survived as hunter-gatherers, living a nomadic life. Then looking at the changes through time into the Bronze Age and Iron Age, we will find out the impact that metals had on this time. We will discover Skara Brae and Stonehenge and look at both in detail.



READING

In KS2 we use a range of guided reading strategies. The children will use a range of texts to build confidence and fluency whilst reading aloud and answering questions to develop comprehension.



Our first class novel is *The World's Worst Teachers* by David Walliams. It is a collection of 10 tales about terrible teachers!

WRITING

We will start the year with a writing project on dinosaurs. Prepared to be amazed with amazing facts in our non-chronological reports. We will get creative with descriptions of dinosaurs that have escaped! We will use everything we know about dinosaurs and fossils (learnt in science) to make acrostic poems.

GEOGRAPHY - LAND USE

We will start the term with a map-based topic on how land is used. Through field work and practical tasks, we will be developing our mapping skills and learning more about our locality. You might like to explore Google Earth at home.

MATHS

To start the year, we will be focusing on place value, partitioning numbers to 1000 as well as addition and subtraction techniques. The children will develop a range of strategies including efficient mental methods, jottings and formal written methods to solve addition and subtraction questions.

SCIENCE

ROCKS & FOSSILS

We will work scientifically and collaboratively to investigate rocks. The children will discover the different types of rocks and fossils and how they are formed. We will find out how important Mary Anning was to the field of palaeontology too.



PE

PE is on a Monday and a Friday this term. The children can come to school in their PE kit on these days. Please can hair to be tied back and earrings removed.

RELIGIOUS EDUCATION

For the first half term, we will be discussing the question 'What is it like to follow God?' This topic will explore the bible, in particular The People of God in the Old Testament.



HOMEWORK

This year, children will be expected to complete the following homework tasks:

- Reading (daily)

Please encourage your child to read, preferably daily and record in their planners. Pupils are welcome to write this themselves. There is great value in a child reading aloud to an adult, so please build this into your homework time. Reading diaries are required in school everyday to monitor reading and for use in guided reading groups.

- Spellings (once per week)

Children will bring home a list of spellings to learn and will be tested on them at the end of the week. Spellings can be completed on the sheet provided. This sheet is to be kept at home.

- TTRockstars

Regular times tables practice will increase their confidence and speed of recall. If you have any problems logging in, please let us know. Children will be tested once a week in a speed test on their target times tables.



Homework will be reviewed and is subject to change.

Please do not hesitate to contact Miss B if you have any questions or concerns. We are really looking forward to our school year together!

Miss Kayleigh Bruerton & Miss Sophie Tams

